

Community **Action**

Annual Impact Report

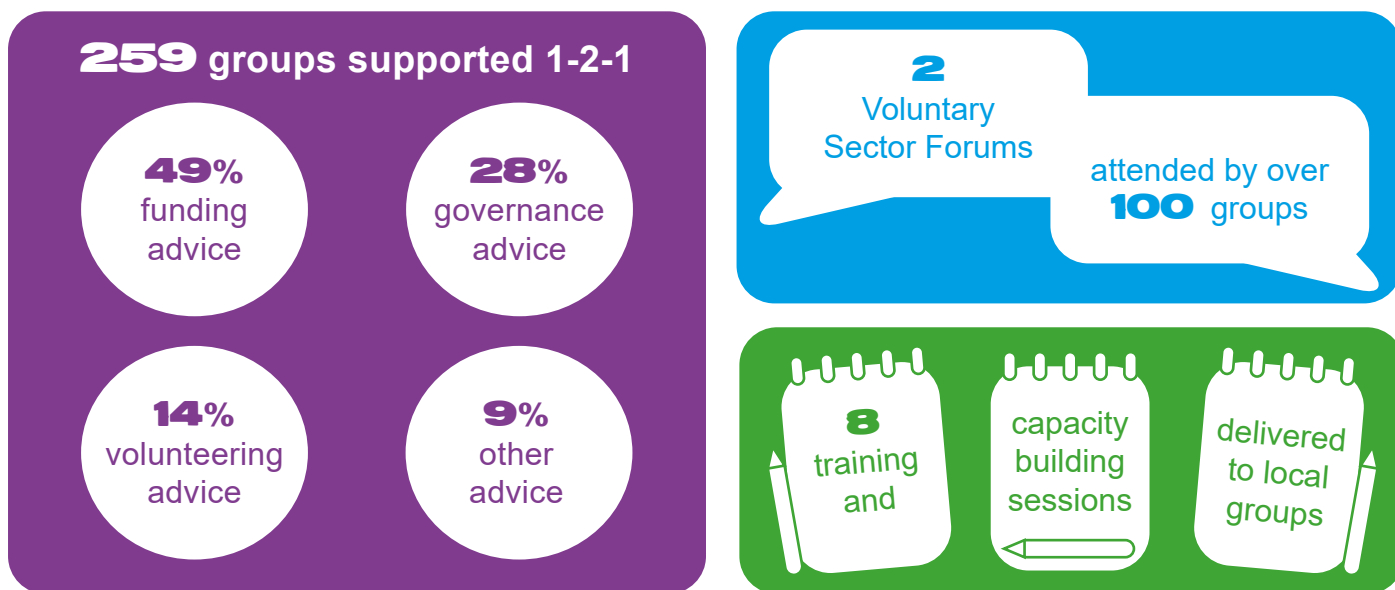


2022/23



Group Support

Our Group Support Service continues to be highly in demand, from both established community groups and new start-ups, with support in securing funding continuing to be our most in-demand service.



"Thank you so much...we are now fully insured and have all policies and procedures in place."
Local CIC supported by the team

Volunteer Centre

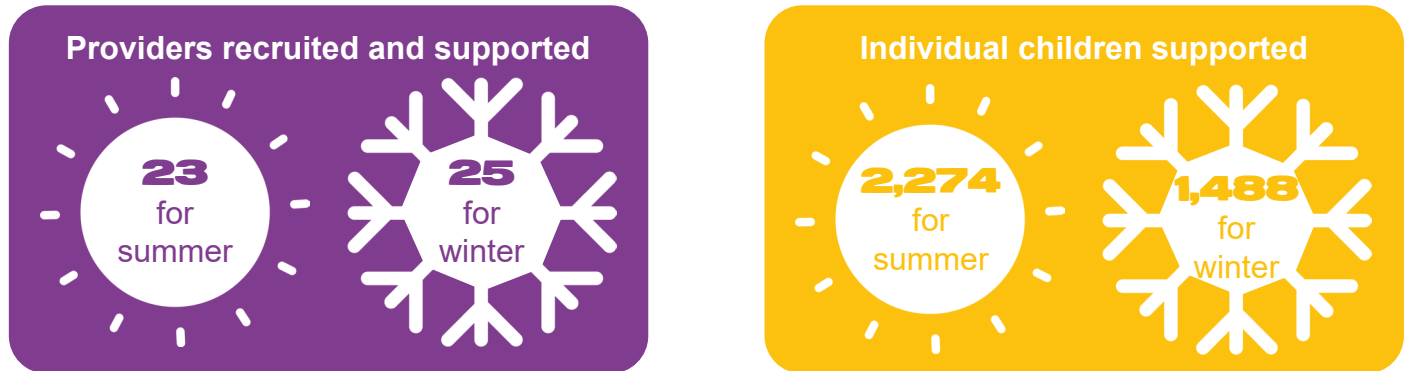
Alongside delivering the usual Volunteer Centre support, on 7 June 2022, we held our first Volunteer Awards event for 3 years. The evening was particularly poignant following an exceptionally difficult couple of years, during which people from all walks of life took the time to volunteer and make a huge difference to their communities.



"I love coming here. It is my second home. I work with an amazing group of people. We are like one big happy family." CA Volunteer

Holiday Activities & Food Programme (HAF)

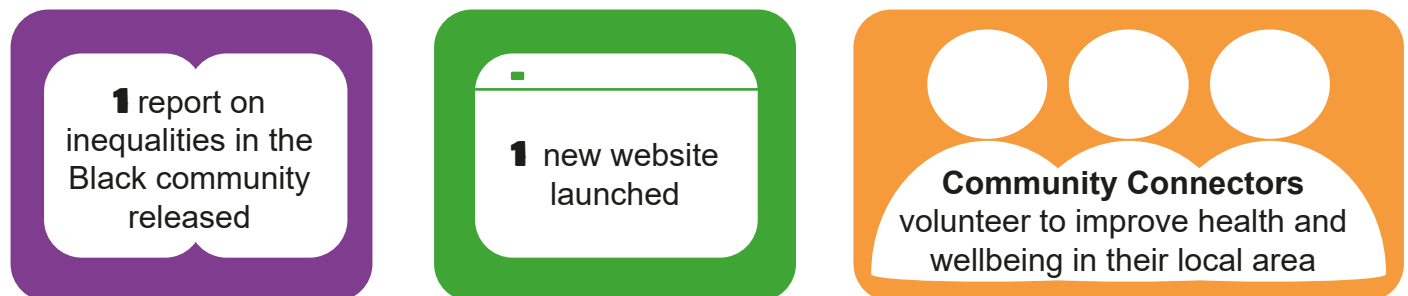
We have continued our partnership with Derby City Council to coordinate the delivery of holiday clubs and healthy food, during the school summer holidays, for children aged 5-16 in the city eligible for benefits related to free school meals.



£ Total grants allocated / facilitated **£775,915**

Derby Health Inequalities Partnership (DHIP)

The Derby Health Inequalities Partnership (DHIP), which supports working towards improvements for marginalised groups within the local healthcare sector, has grown exponentially.



£ 16 groups were allocated a share of **£47,862** for Community Connectors

Active Through Football Derby (now DE23 Active)

The DE23 Active project, which aims to increase opportunities for physical activity in Normanton and Arboretum, has ballooned in popularity. Chill and Chai, Chair Based Exercise classes, Dads and Lads and Boxercise were among the sessions being run.



Derby Social Prescribing

Our Social Prescribers from Derby City South PCN have been busy over the last financial year, reaching their target of 1.2% of the total patient population being referred into social prescribing.



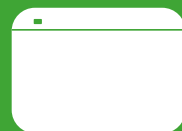
Over **1,230** patients seen by Derby City South Social Prescribers

Cost of Living Support

We partnered with DCC and Derby Homes to create an online Cost of Living Support Hub, to support Derby City residents. As part of the Derby Community Hub partnership, we also took any calls relating to this. We also administered grants for Warm Welcome Hubs.



From August 22 – March 23
4,684 calls received



From August 22 – March 23
the online hub was viewed
47,993 times



61 Warm Welcome Hubs provided warm spaces, a hot drink and a meal, and other Cost of Living support to **29,543** adults and **4,536** children.

Maths Multiply

We facilitated the allocation of grants for Maths Multiply, a new government-funded programme aimed at helping adults improve their numeracy skills.

8 organisations



grants to
deliver training



316 people completed a course and **507**
people took part in a one-off activity.

Derby Youth Alliance / CYP Network

Towards the end of 2021 the Youth Alliance and the Children and Young People's Network came together and we can report that the merger has been a big success!



7 Network Meetings with
40 organisations, on
average, attending



11 groups were awarded YA Inspire and
Innovate grant funding totalling **£8,693**



113 Youth Alliance referrals received from schools, Derby City Council and Derby Homes

Communications



5,631 social
media followers



134,000
website page views



34 e-bulletins sent to
1,206 subscribers